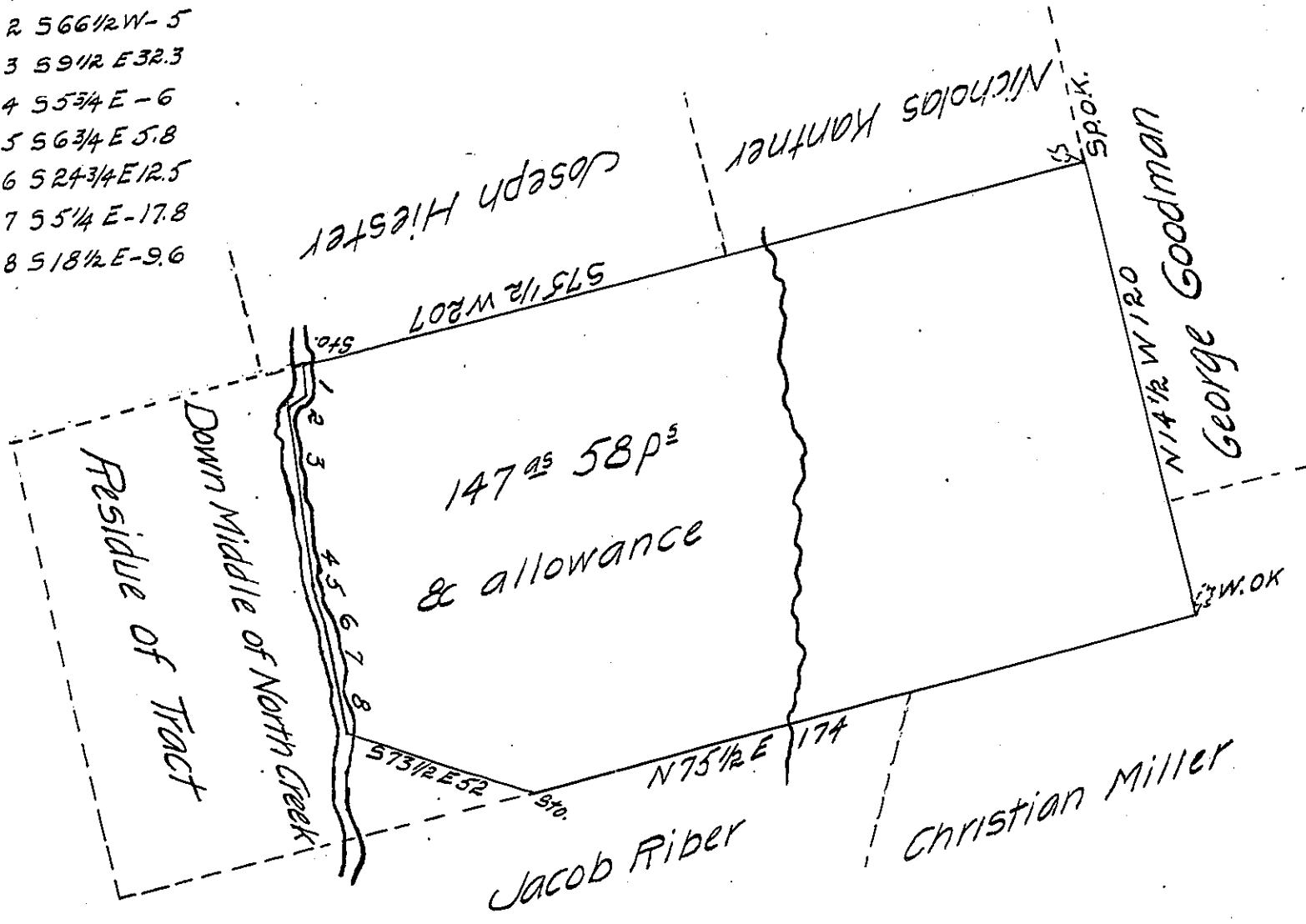


Courses & Distances down the Middle of North Creek.

- Vize NO. 1 SOUTH 8.2
- 2 S 66 1/2 W - 5
- 3 S 9 1/2 E 32.3
- 4 S 5 3/4 E - 6
- 5 S 6 3/4 E 5.8
- 6 S 24 3/4 E 12.5
- 7 S 5 1/4 E - 17.8
- 8 S 18 1/2 E - 9.6



Situate in Tulpehocken Township Berks County containing one hundred forty seven acres fifty eight perches and allowance of six per cent for Roads &c part of 191 acres and allowance Originally Surveyed to Henry Seller by Virtue of a Warrant dated the 25th day of October 1734.

Resurveyed the above for Valentine Boltz the 23^d day of June 1821.

per J^{ro} V. Epler D.S.

To Samuel Cochrane Esq^t }
 Surveyor General }

IN TESTIMONY that the above is a copy of the original remaining on file in the Department of Internal Affairs of Pennsylvania, made conformably to an Act of Assembly approved the 16th day of February, 1833, I have hereunto set my Hand and caused the Seal of said Department to be affixed at Harrisburg, this fifteenth day of December 1906

Isaac B. Brown
 Secretary of Internal Affairs